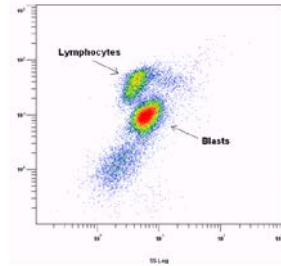


FLOW CYTOMETRY

TEST MENU & ROUTINE MARKERS USED



Flow **Cytometry** testing is performed daily, with typical turnaround time of 1-2 days. All leukemia/lymphoma studies are reviewed and interpreted by a hematopathologist. PeaceHealth Laboratories' hematopathologists are readily accessible, and are able to provide expedited interpretation and diagnosis for critical cases.

TEST NAME	ORDERING CODE
Leukemia/Lymphoma Panel	29350

The following antibodies are routinely included in this panel, depending on clinical indication provided to the lab:

- **Lymphoma/lymphoproliferative disorders** including chronic lymphocytic leukemia (**CLL**). Also performed on **body fluid flow studies** unless otherwise specified:
CD 45, 2, 3, 4, 5, 8, 10, 19, 20, 23, 34, 38, 56, FMC7, HLA-DR, kappa, lambda
- **Reflex “Extra B” panel** (added if B cell abnormality, not classic for CLL, including **lymphomas** and **hairy cell leukemia**):
CD 45, 11c, 19, 22, 25, 103, 123, 117, 200
- **Reflex “Extra T” panel** (added if T or NK cell abnormality):
CD 45, 1a, 2, 3, 7, 16, 19, 57, TCR $\alpha\beta$, TCR $\delta\gamma$
- **High grade MDS, AML in remission:**
CD 45, 10, 11b, 13, 14, 15, 16, 19, 33, 34, 38, 64, 71, 117, 123, HLA-DR
- **Acute leukemia/cytopenia:**
CD 45, 3, 4, 5, 8, 10, 11b, 13, 14, 15, 16, 19, 33, 34, 38, 56, 64, 71, 117, 123, HLA-DR
If ALL, the following are added: CD 2, 20, 23, FMC7, kappa, lambda
- **Cytoplasmic panel** (added if indicated for acute leukemia classification):
CD 45, CD 3 cytoplasmic, CD 22 cytoplasmic, 34, 79a cytoplasmic, 117, MPO, TdT
- **Mast cell panel:**
CD 45, 2, 19, 25, 117, 123
- **Celiac panel:**
CD 45, 1a, 2, 3, 4, 7, 8, 16, 19, 57, 103, TCR $\alpha\beta$, TCR $\delta\gamma$
- **Sezary cell panel:**
CD 45, 2, 3, 4, 5, 7, 8, 19, 26, 64
- **Neutrophilia, monocytosis, thrombocytosis:**
CD 45, 13, 15, 19, 34, 38, 71, 117, 123, HLA-DR
- **Eosinophilia:**
CD 45, 3, 4, 5, 8, 13, 15, 19, 34, 38, 56, 71, 117, 123, HLA-DR

Continued

PEACEHEALTH LABORATORIES

Plasma Cell panel <i>(CD38 & CD138 in each tube for plasma cell gating)</i> CD 45, 19, 38, 56, 117, 138, cytoplasmic kappa, cytoplasmic lambda	29490
BAL/Sputum panel CD 45, 2, 3, 4, 8, 20, HLA-DR	29801
ZAP-70 CD 3, 5, 19, 56, cytoplasmic ZAP-70	29875
CD20 panel (Rituxan) CD 45, 2, 19, 20	29157
CD52 panel (Campath) CD 45, 2, 19, 52	29155
Individual marker (specify marker of interest)	29050
PNH, WBC/RBC (high sensitivity) WBC: CD 45, 15, 16, 24, FLAER RBC: CD 59	29875
HLA-B27 HLA-B27	29850
Immunodeficiency panel, CD3/4 CD 45, 3, 4	29150
Immunodeficiency panel, CD3/4/8 CD 45, 3, 4, 8	29100
Immunodeficiency panel, CD3/4/8/B/NK <i>Includes B markers for CVID evaluation</i> CD 45, 3, 4, 8, 19, 27, 56, IgD	29001

For clinical support, contact:



Daniel Kerrigan, MD
Director, Flow Cytometry
Board Certified: Hematopathology
1-800-826-3616 ext. 8036



Deven Smith, MD
Co-Director, Flow Cytometry
Board Certified: Molecular
Pathology and Hematopathology
1-800-826-3616 ext. 8289

For technical support, contact:



Michael Suter, MT(SH)
Technical Specialist, Flow Cytometry
Member: ISAC PNH and Flow Certification committees
1-800-826-3616, ext. 8182 or cell phone 541-968-4917